

Frenchay Primary New Build November 2021

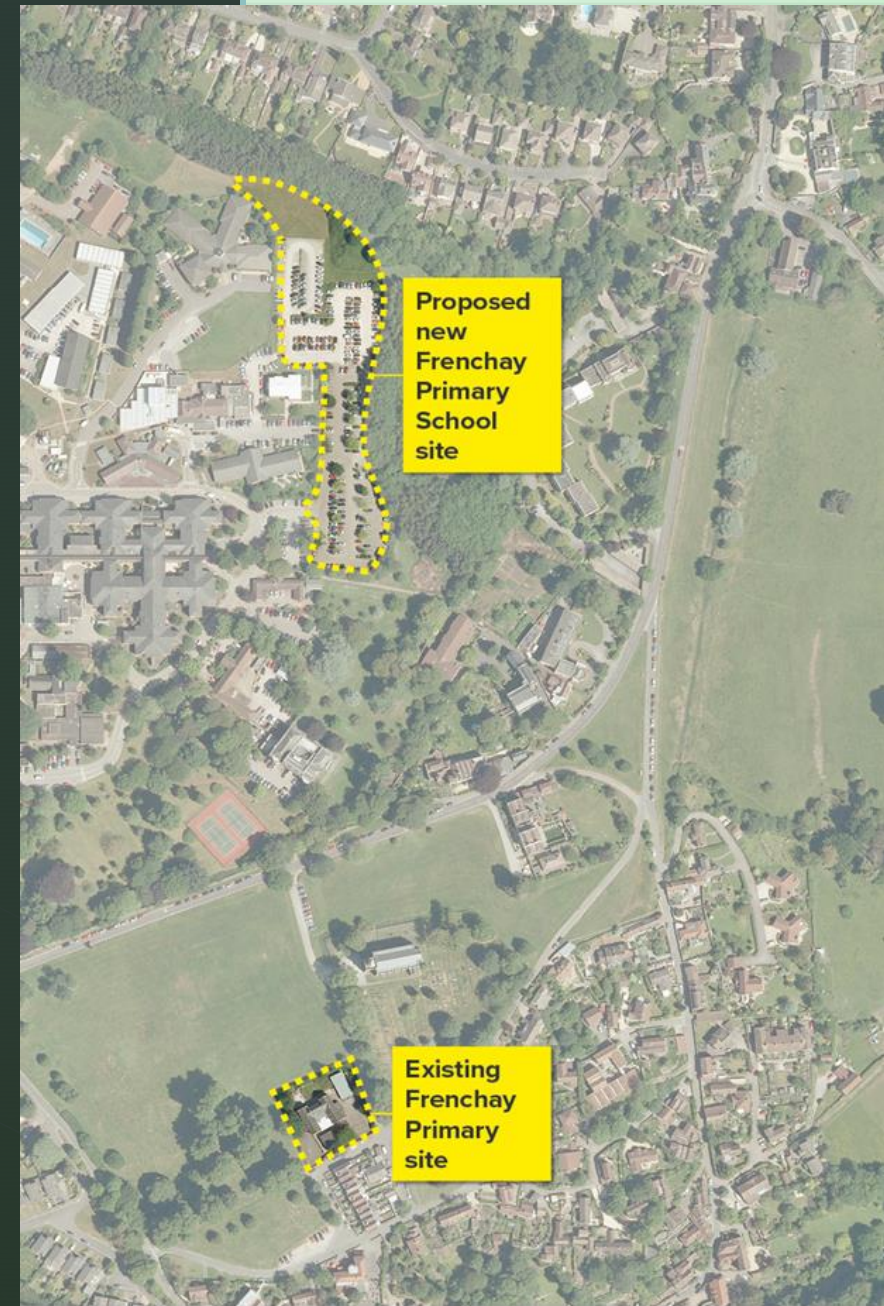


Our new building is a passivhaus building. Watch this video clip to find out what that means!

<https://www.youtube.com/watch?v=fqiXHzTkrOY>

And see this one to see what Passivhaus schools are like!

<https://www.youtube.com/watch?v=TTUbsKPkKPo>



Insulation

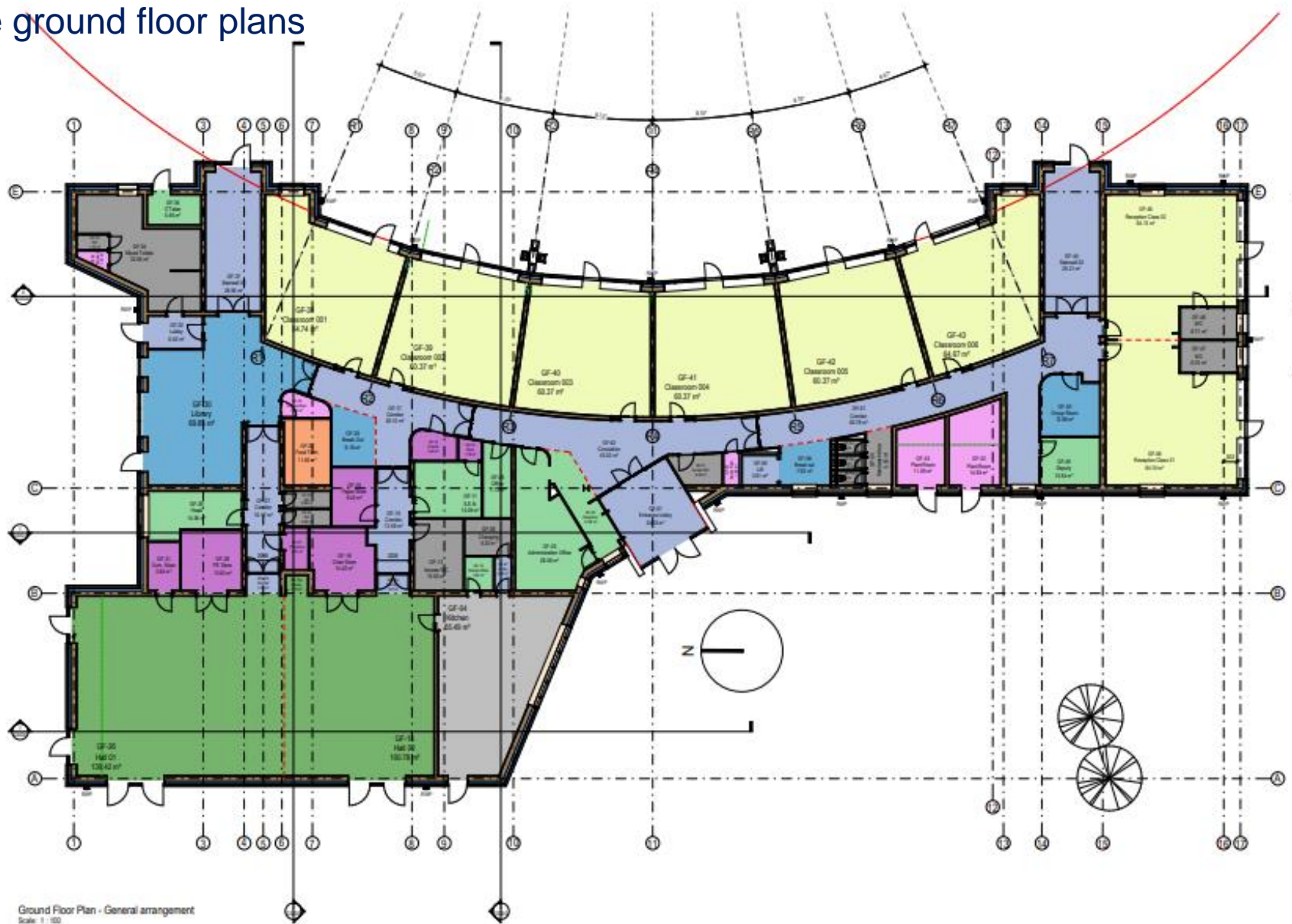
- Our school is super insulated! It has an extra thick layer of insulation underneath the base of the building. This will help to keep the heat within the building.



▶
The wooden batons mark out where all the walls will go. Here you can see one of the classrooms.

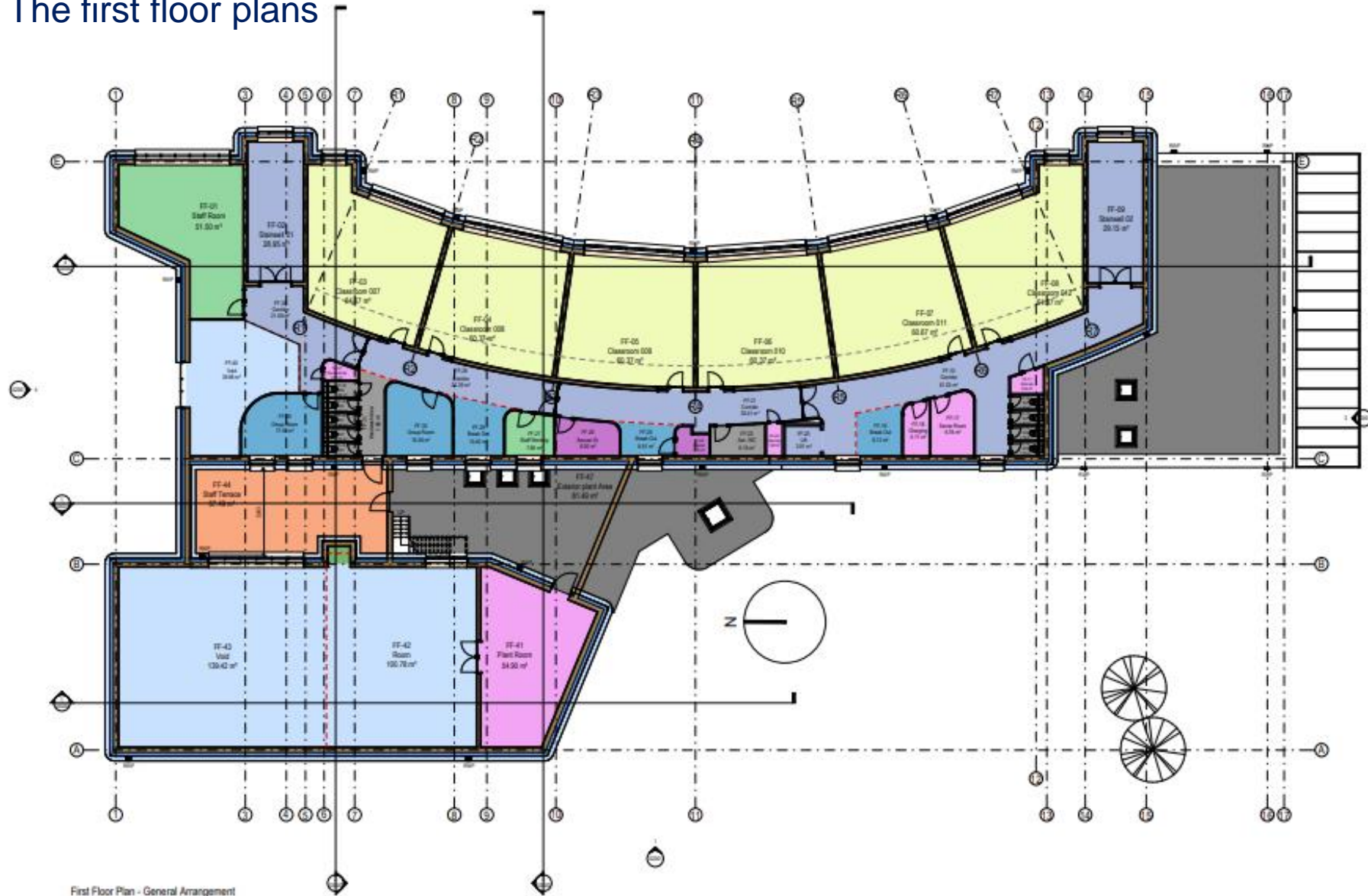


The ground floor plans



Ground Floor Plan - General arrangement
Scale: 1:100

The first floor plans



First Floor Plan - General Arrangement
Scale: 1:100



Here are the timber frames for the Key Stage One classrooms on the ground floor.



Mrs Townend is the Director of the Diocese. She visited the site with Mrs Marks to look around. Our new school will be the first Passivhaus school in the Bristol Diocese.

- Walking down the 'corridor' with the new classrooms on the left. This will be year 2's classroom.

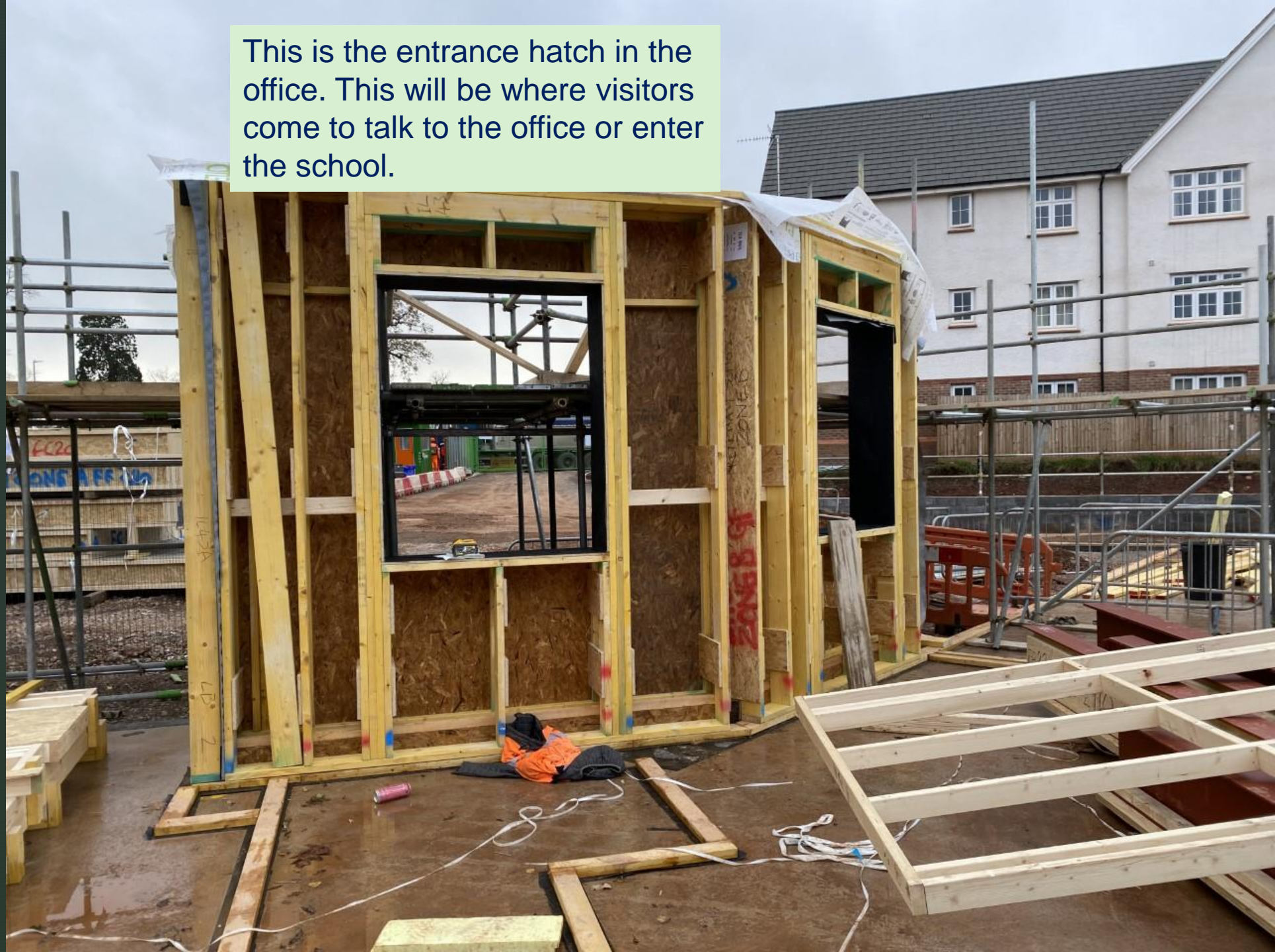


The timber frames ready to install.

On the right is the entrance area for visitors to come in.



This is the entrance hatch in the office. This will be where visitors come to talk to the office or enter the school.

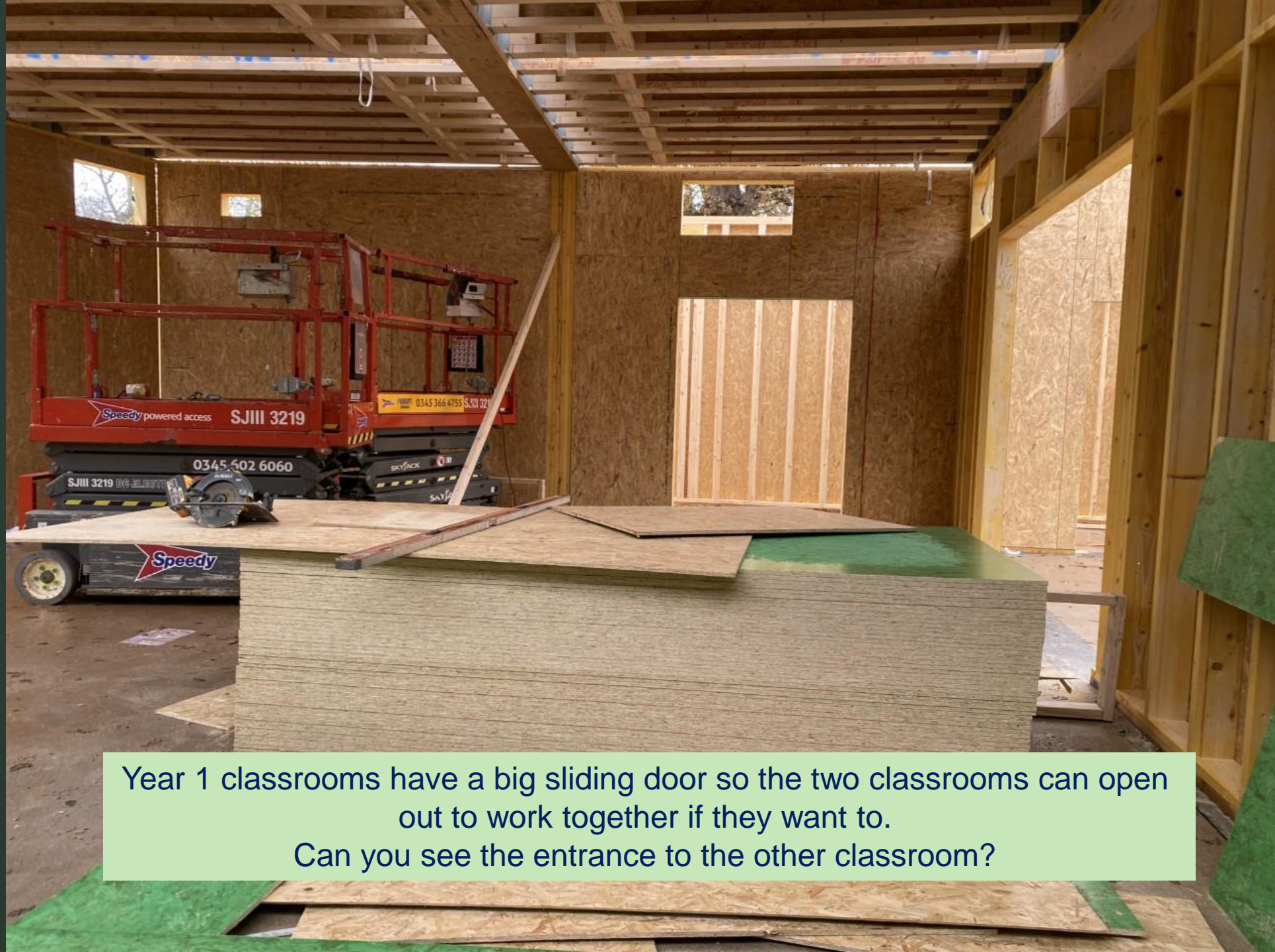


Year 1 classroom looking out over their outside area.



Year 1 Classrooms
This was only 24 hours old when the photo was taken!





Year 1 classrooms have a big sliding door so the two classrooms can open out to work together if they want to.
Can you see the entrance to the other classroom?



The other Year 1 classroom looking out over their outside area. Can you see the doorway? The gap will all be windows. These will be triple glazed to keep the heat in as you saw in the video.



Year 1 classroom looking in from the outside.

▶ The outside play area for year 1, 2 and 3 with the classrooms on the left.







- This is a group room near the reception classroom. On the other side you can see Mr Backett's new office.
- Can you find it on the floor plans?



Reception Classrooms. They also will have a sliding door to open to make one big classroom.



The other reception classroom. The gaps are the windows to let lots of light in.



Mr Backett's office.



This will be our new hall. Beyond it is the spiritual garden and the basket ball and netball pitches as well as the field.





This is a driveway area along the side of the hall. We will be able to play here as it will have gates to keep us safe.

